

14 min.

TOCCATA AND FUGUE FOR VIOLIN, CELLO AND BASSOON.

14-11-94

①

CELLO AND BASSOON.

by David Pitman

©1994 David Pitman

TOCCATA Presto possibile

① *spicc. V sim.*

Violin *mf* *sim.*

Cello *mf* *saie spicc.* *sim.*

Bassoon *mf*

mf stacc. poss.

②

V *mf* *p*

C *p*

B *mf* *p*

③

V *mf* *p* *pp*

C *pp*

B *p* *mf* *pp* *sempre*



19

V *pp*

C *pp*

B *pp* *pp*

25

V *mp* *p* *mf* *mp* *mf* *ff* *p* *pp* *spicc*

C *ff* *pp dolce*

B *p* *p* *mp* *mf* *ff* 1 2

31 *sim.*

V *pp*

C *pp*

B 3 4 *pp tenebroso*

37

Handwritten musical score for measures 37-42. The score includes staves for Violin (V), Violoncello (Vc), Contrabasso (Cb), and Bass (B). The Violin part consists of six measures of whole notes: D#4, E#4, F#4, G#4, A#4, B4. The Violoncello part features a melodic line with dynamics *p*, *pp*, *mp*, and *pp*, including a *spicc.* marking and an *arco* instruction. The Contrabasso part has dynamics *p* and *mp*. The Bass part is marked with double slashes. A handwritten note at the bottom right of the system reads "pp sempre legato possibile".

43

Handwritten musical score for measures 43-48. The Violin part consists of six measures of whole notes: D#4, E#4, F#4, G#4, A#4, B4. The Violoncello part features a melodic line with a *poco a poco crescendo sempre* instruction. The Contrabasso part also features a *poco a poco crescendo sempre* instruction. The Bass part is marked with double slashes.

49

Handwritten musical score for measures 49-54. The Violin part consists of six measures of whole notes: D#4, E#4, F#4, G#4, A#4, B4. The Violoncello part features a melodic line with dynamics *mp* and *p*. The Contrabasso part features a melodic line with dynamics *mp* and *p*. The Bass part is marked with double slashes.



55

V *mp crescendo* *f* *mf* *sim*

C *mf* *f* *mf*

B *mf* *f* *p* *mf*

56

V *p*

C *p* *spicc. sempre*

B *sub p* *p stacc. pass. sempre*

57

V *p* *mf* *p*

C *p crescendo*

B *p crescendo*



73

V *p* *mf* *p* *mf* *f*

C *mf* *crescendo* *f*

B *mf* *crescendo* *f*

79

V *mf* *f* *mf* *ff* *sempre con forza*

C *f* *ff* *spicc.* *sim* *f*

B *f* *ff* *f*

85

V *f* *ff* *f* *ff* *f*

C *ff* *f* *ff* *f* *f*

B *f* *ff* *f* *f* *f*



Handwritten musical score for the first system, featuring three staves labeled V, C, and B. The V staff begins with a circled '1' and the instruction 'loco'. The C staff includes dynamic markings such as *f*, *ff*, and *spicc.*. The B staff contains rhythmic notation with vertical stems.

Handwritten musical score for the second system, featuring three staves labeled V, C, and B. The V staff includes markings for 'gve', 'loco', and 'spicc'. The C staff includes 'arco' and 'spicc.' markings. The B staff includes 'fff' markings. The system concludes with double bar lines.

Handwritten musical score for the third system, featuring three staves labeled V, C, and B. The V staff includes markings for 'gve', 'loco', and dynamic markings *ff* and *f*. The C staff includes 'ff' and *f* markings. The B staff includes 'ff' and *f* markings. The system concludes with double bar lines.



109

V *mf* *mp*

C *mf*

B *mp*

115

120 *Largo* $\text{♩} = 40$
~~#0~~ *glissa.*

V *p dim* *pp*

C *dim* *p dim.* *pp*

B *p dim* *ppp glissa.*

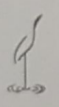
FUGUE

121 *Lento* *ad oroso* $\text{♩} = 60$

V

C *ppp* *mp* *p sempre legato possibile*

B



126

pp sempre legato possibile

130

pp p

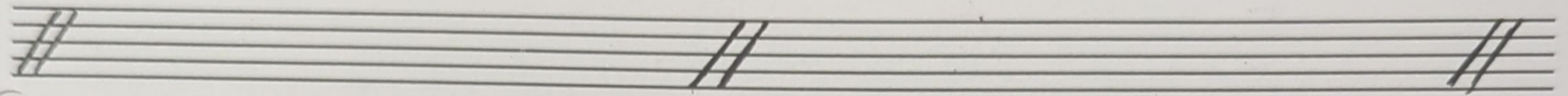
134

mp pp dolce pp (as if from a far) ppp sempre

138

V
C
B

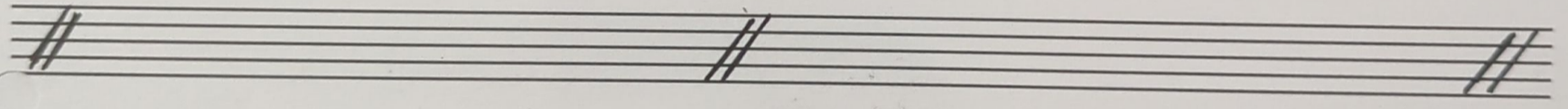
p pp p pp



142

V
C
B

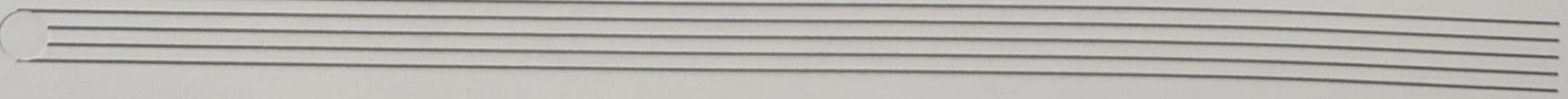
ppp pp ppp p



146

V
C
B

pp p pp p



150

Handwritten musical score for measures 150-153. It consists of three staves: Violin (V), Cello (C), and Bass (B). The Violin staff has a circled measure number '150' and contains a melodic line with various accidentals and dynamics like *mp*. The Cello and Bass staves provide harmonic support with chords and moving lines, marked with dynamics such as *p* and *pp*. The system ends with a double bar line.

154

Handwritten musical score for measures 154-157. It consists of three staves: Violin (V), Cello (C), and Bass (B). The Violin staff has a circled measure number '154' and continues the melodic line. The Cello and Bass staves continue their harmonic accompaniment, with dynamics like *p*, *pp*, and *mp*. The system ends with a double bar line.

158

Handwritten musical score for measures 158-161. It consists of three staves: Violin (V), Cello (C), and Bass (B). The Violin staff has a circled measure number '158' and features a melodic line with dynamics *p*, *mp cantabile*, and *mf*. The Cello and Bass staves continue their accompaniment, with dynamics like *pp* and *mp*. The system ends with a double bar line.



162

V *mp* *p* *pp* *mp vibrato*

C *mp cantabile* *mf*

B *p* *mp cantabile* *mf* *poco*

166

V *mf* *mp* *mf* *f*

C *pp* *p cantabile* *mp*

B *mp* *p* *pp*

170

V *p poco scherzando* *p*

C *pp* *ppp* *p*

B *mp* *mf* *mf*



174

opt. (Σ)

arco

mf

f

mf

mp

p

pp

ppp

p poco scherzando

178

tr

ppp

p

mp

mf

legato

mf

f

182

mp

pp

p

f

ppp

p poco scherzando

mf

mp

p

mf



186

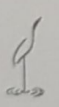
Handwritten musical score for measures 186-190. It consists of three staves: Violin (V), Cello (C), and Bass (B).
 - **Violin (V):** Treble clef, 7/8 time signature. Starts with a forte (*f*) dynamic and a "sempre" marking. Features trills and slurs. A fermata is present at the end of the first system.
 - **Cello (C):** Bass clef, 7/8 time signature. Starts with a piano (*p*) dynamic and an "arco" marking. Dynamics range from *p* to *f*.
 - **Bass (B):** Bass clef, 7/8 time signature. Starts with a piano (*p*) dynamic. Dynamics range from *p* to *f*.
 - **Measure 190:** A double bar line is followed by a fermata on the C and B staves.

190

Handwritten musical score for measures 190-194. It consists of three staves: Violin (V), Cello (C), and Bass (B).
 - **Violin (V):** Treble clef, 7/8 time signature. Starts with a forte (*f*) dynamic. Features trills and slurs.
 - **Cello (C):** Bass clef, 7/8 time signature. Starts with a forte (*f*) dynamic. Features trills and slurs.
 - **Bass (B):** Bass clef, 7/8 time signature. Starts with a forte (*f*) dynamic. Features trills and slurs.
 - **Measure 194:** A double bar line is followed by a fermata on the C and B staves.

194

Handwritten musical score for measures 194-200. It consists of three staves: Violin (V), Cello (C), and Bass (B).
 - **Violin (V):** Treble clef, 7/8 time signature. Starts with a forte (*f*) dynamic. Dynamics range from *f* to *mf*.
 - **Cello (C):** Bass clef, 7/8 time signature. Starts with a forte (*f*) dynamic and a "sempre" marking. Dynamics range from *f* to *mf*.
 - **Bass (B):** Bass clef, 7/8 time signature. Starts with a forte (*f*) dynamic. Dynamics range from *f* to *mf*.
 - **Measure 200:** A double bar line is followed by a fermata on the C and B staves.



198

V *f sempre*

C *f sempre*

B *f sempre*

202

V *f sempre*

C *f sempre*

B *f sempre*

206

V *ff marcato*

C *ff marcato*

B *ff marcato*

p *ff* *pp*

p *ff* *pp sempre*

p *ff* *pp sempre*



(210) (as if from afar)

V *ppp dolce*

C *pp sempre*

B *pp sempre*

(214)

V *ppp dolce*

C *pp sempre*

B *pp sempre*

(218) (sul A)

V *sempre pp*

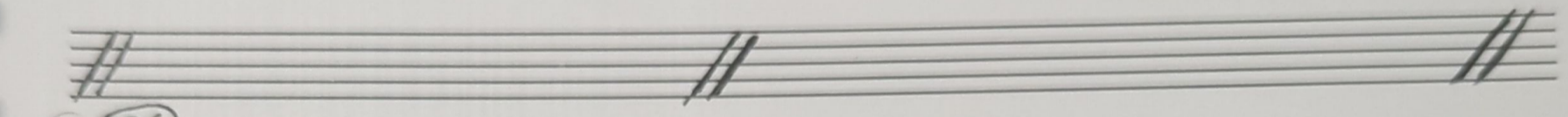
C *pp sempre*

B *pp sempre*



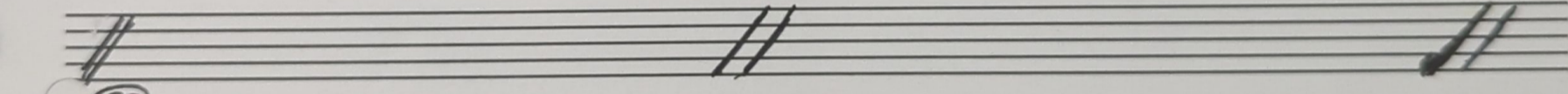
222

Handwritten musical score for system 222. It consists of three staves: Violin (V), Cello (C), and Bass (B). The Violin staff features a melodic line with various accidentals and dynamics, including *pp*. Above the staff, there are handwritten notes: \sharp , \flat , \sharp , \flat , \sharp , \flat , \sharp , \flat , \sharp . The Cello staff has notes with fingerings 15, 16, and 17, and a dynamic marking of *pp*. The Bass staff has notes with a dynamic marking of *pp*. The system ends with a double bar line.



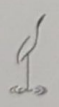
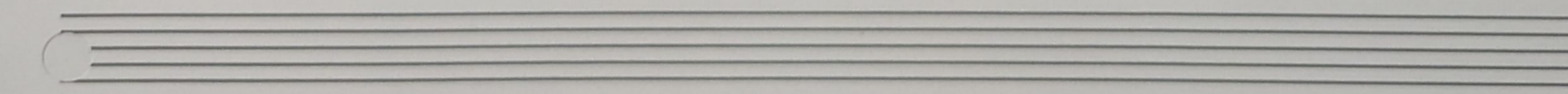
226

Handwritten musical score for system 226. It consists of three staves: Violin (V), Cello (C), and Bass (B). The Violin staff has notes with fingerings 3, 3, 4, and 5, and a dynamic marking of *pp sempre*. The Cello staff has notes with a dynamic marking of *p* and a \sharp accidental. The Bass staff has notes with a dynamic marking of *pp*. The system ends with a double bar line.



230

Handwritten musical score for system 230. It consists of three staves: Violin (V), Cello (C), and Bass (B). The Violin staff has notes with fingerings 6, 7, 8, and 9, and a dynamic marking of *pp*. The Cello staff has notes with a dynamic marking of *p* and a *crescendo* marking. The Bass staff has notes with a dynamic marking of *pp*. The system ends with a double bar line.



Handwritten musical score for measures 10-13. The system includes three staves: Violin (V), Cello (C), and Bass (B).
 - **Violin (V):** Treble clef, key signature of one sharp (F#). Measures 10-13 contain whole notes: F#4, G#4, A4, B4.
 - **Cello (C):** Bass clef, key signature of one sharp (F#). Measures 10-13 contain quarter notes: F#2, G#2, A2, B2. Measure 11 includes a trill (tr) over the B2 note.
 - **Bass (B):** Treble clef. Measure 10 contains a whole note F#2. Measure 11 contains a whole note G#2. Measure 12 contains a whole note A2. Measure 13 contains a whole note B2.
 - **Annotations:** *pp* (pianissimo) is written below the violin staff. *mf* (mezzo-forte) *crescendo* is written below the cello staff, with a dashed line indicating the dynamic change. *f* (forte) is written below the cello staff at measure 11. *pp sempre* (pianissimo sempre) is written below the cello staff at measure 12. *mp* (mezzo-piano) is written below the bass staff at measures 12 and 13.

Handwritten musical score for measures 14-17. The system includes three staves: Violin (V), Cello (C), and Bass (B).
 - **Violin (V):** Treble clef, key signature of one sharp (F#). Measures 14-17 contain whole notes: F#4, G#4, A4, B4.
 - **Cello (C):** Bass clef, key signature of one sharp (F#). Measures 14-17 contain quarter notes: F#2, G#2, A2, B2. Measure 14 includes a trill (tr) over the F#2 note.
 - **Bass (B):** Treble clef. Measures 14-17 contain quarter notes: F#3, G#3, A3, B3. Measure 15 includes a trill (tr) over the G#3 note.
 - **Annotations:** *pp* (pianissimo) is written below the violin staff. *pp* (pianissimo) is written below the cello staff. *p* (piano) is written below the bass staff at measures 14 and 15. *pp* (pianissimo) is written below the bass staff at measure 17. *p* (piano) is written below the bass staff at measure 18.

Handwritten musical score for measures 18-21. The system includes three staves: Violin (V), Cello (C), and Bass (B).
 - **Violin (V):** Treble clef, key signature of one sharp (F#). Measures 18-21 contain whole notes: F#4, G#4, A4, B4.
 - **Cello (C):** Bass clef, key signature of one sharp (F#). Measures 18-21 contain quarter notes: F#2, G#2, A2, B2. Measure 18 includes a trill (tr) over the F#2 note.
 - **Bass (B):** Treble clef. Measures 18-21 contain quarter notes: F#3, G#3, A3, B3. Measure 19 includes a trill (tr) over the G#3 note.
 - **Annotations:** *pp* (pianissimo) is written below the violin staff. *pp* (pianissimo) is written below the cello staff. *mp* (mezzo-piano) is written below the bass staff at measure 18. *p* (piano) is written below the bass staff at measure 19. *mp* (mezzo-piano) is written below the bass staff at measure 20. *fp* (fortissimo) is written below the bass staff at measure 21.



246

V *f* energetico sempre

C *f* energetico sempre

B *f* energetico sempre

250

V *f*

C *f*

B *f*

254

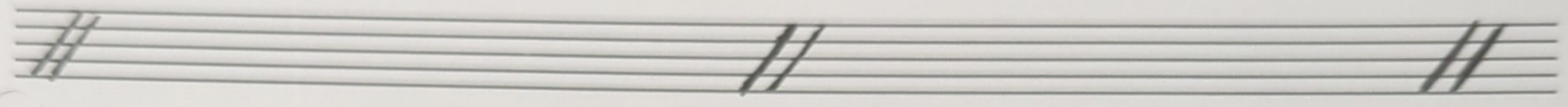
V *f*

C *f*

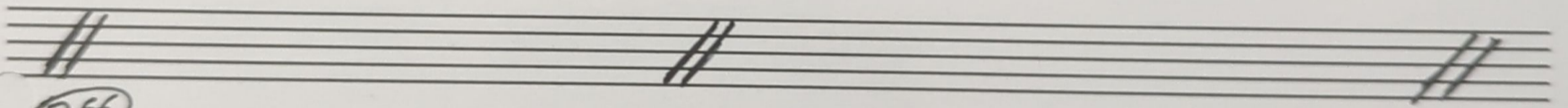
B *f*



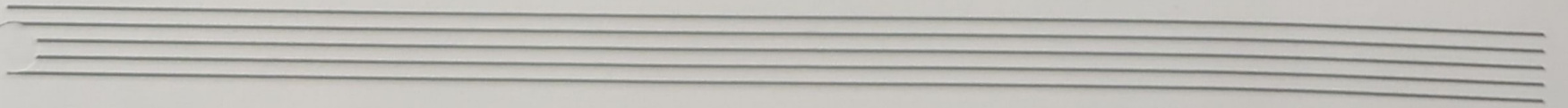
258



262



266



270

V *f*

C *f*

B *f*

274

V *f*

C *f*

B *f*

278

V *f*

C *f*

B *f*



282

286

290



294

V *f* poco a poco crescendo

C poco a poco crescendo

B *f* poco a poco crescendo

298

V *fff*

C *fff* *mf*

B *fff*

302

305 LR

V

C *mp* *p* *poco* *mp*

B

non ritenuto al Finé

